



EARTH ANALYTICS FOR COGNITIVE PLACES



**IN AN INCREASINGLY COMPLEX AND
VOLATILE WORLD, BEING PREPARED
FOR TOMORROW'S URBAN
SUSTAINABILITY CHALLENGES
REQUIRES A NEW WAY TO LOOK**

**WHY IS IT SO IMPORTANT TO TALK
ABOUT THE SUSTAINABILITY OF
URBAN AREAS?**

**OUR CITIES ARE ON THE FRONTLINE
OF CLIMATE CHANGE.
HOW CAN WE DESIGN THEM TO BE
MORE RESILIENT AND
SUSTAINABLE?**

CITIES NEED DATA FOR SUSTAINABLE CHOICES



Environmental
Preservation /
Biodiversity



Sustainable
Development
Practices



Inclusive
Living
Environment



Climate
Change
Resilience

To overcome these challenges, data must be **global, detailed, up-to-date, accessible, and reliable.**

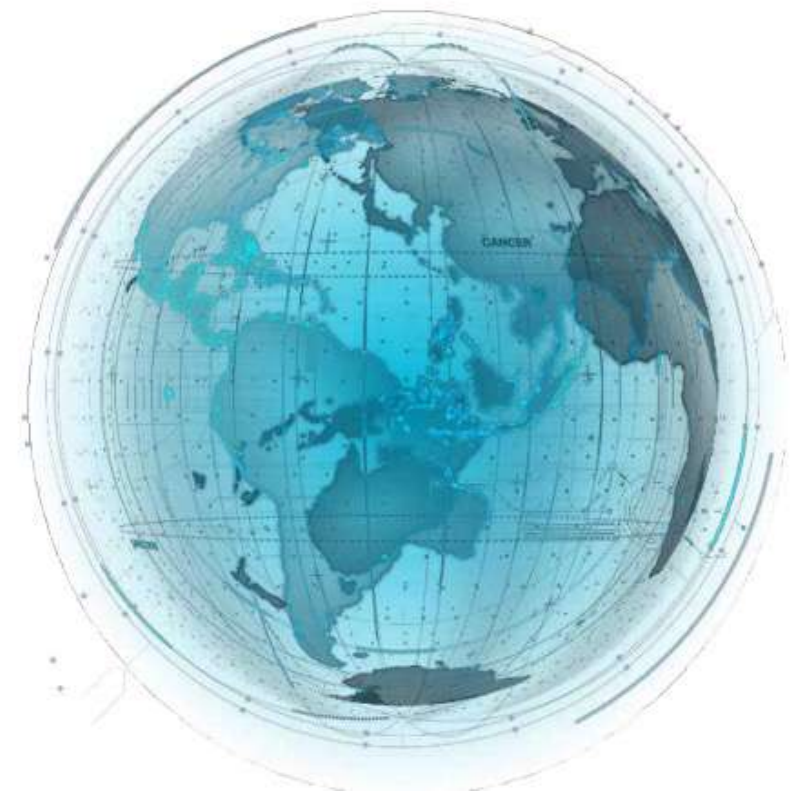
Only in this case can they provide a real contribution to an ambitious vision oriented towards sustainability.

EMPOWERING SUSTAINABILITY: REMOTE SENSING AND AI

**Continuous Acquisition
everywhere in the world.**



**Actionable Insights based on
powerful AI-driven algorithms.**



OUR SOLUTION

The first **Environmental Operative System** to design cognitive cities/places of the future



DATA FROM SPACE
✗ (REMOTE SENSING)



LATITUDO 40 ARTIFICIAL
INTELLIGENCE

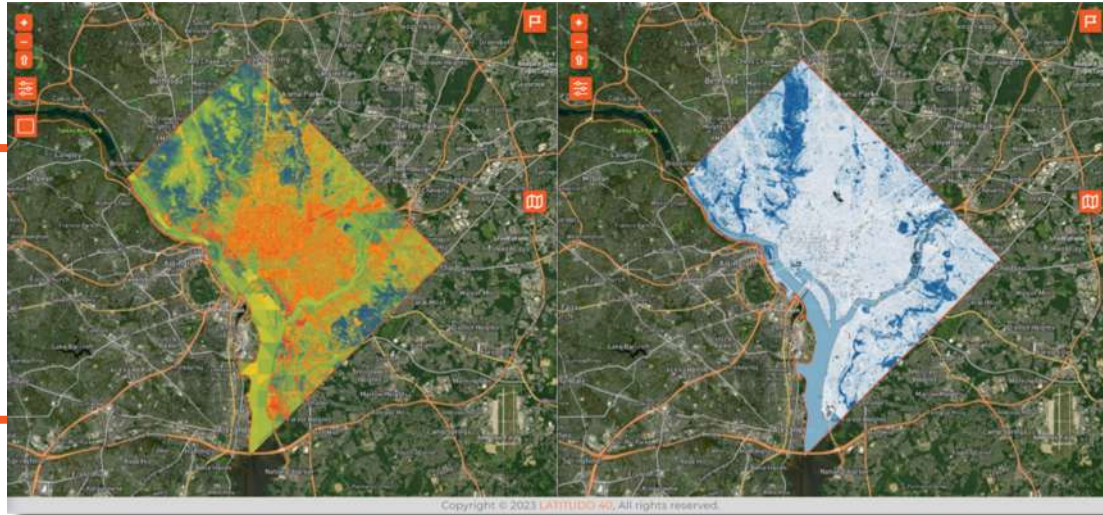


EARTH ACTIONABLE
INSIGHTS & SIMULATIONS

Designed to **ensure** that decision-makers can **grasp**
and **act** quickly on our insights. ...



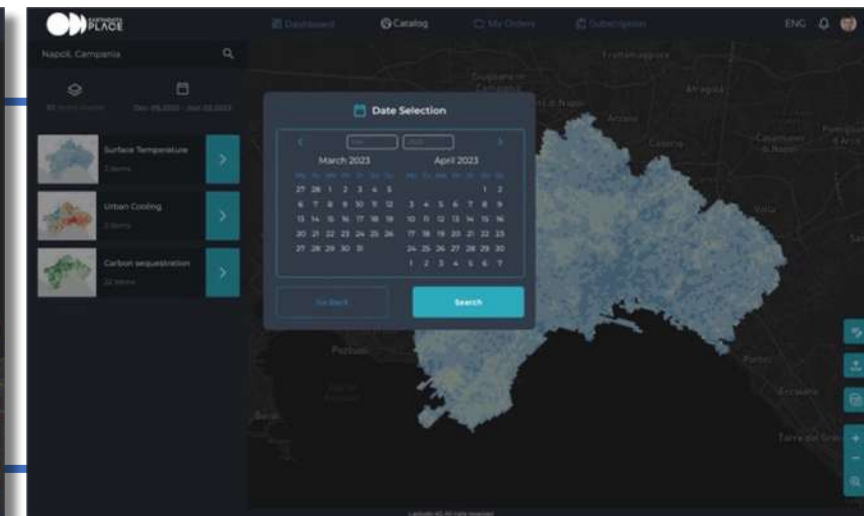
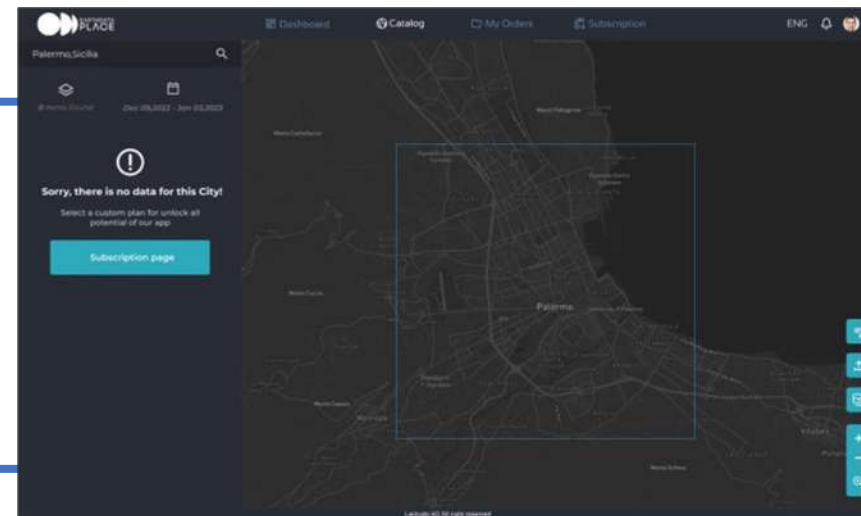
BY IDENTIFYING HIGH-RISK AREAS, CITIES CAN IMPLEMENT
TARGETED MITIGATION ACTIONS, TURNING VULNERABLE
ZONES INTO RESILIENT SPACES.



SaaS Platform for cities and urban planners



**Dataset digital
Marketplace**



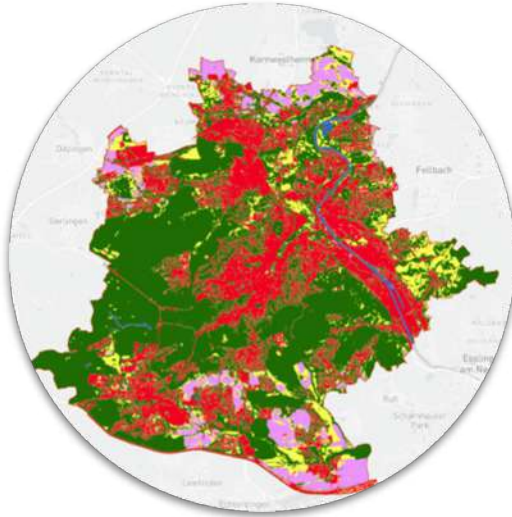
The **Power of AI** with our **Super Resolution Algorithm**



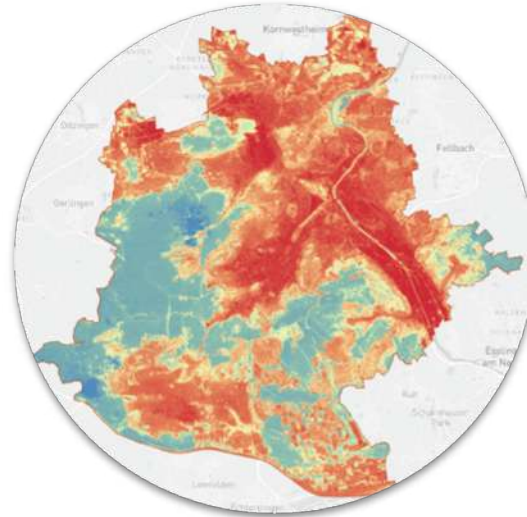
AI Algorithm to bring Copernicus Sentinel 2 spatial resolution from 10 m to 1 m

THE POWER OF LAYERS

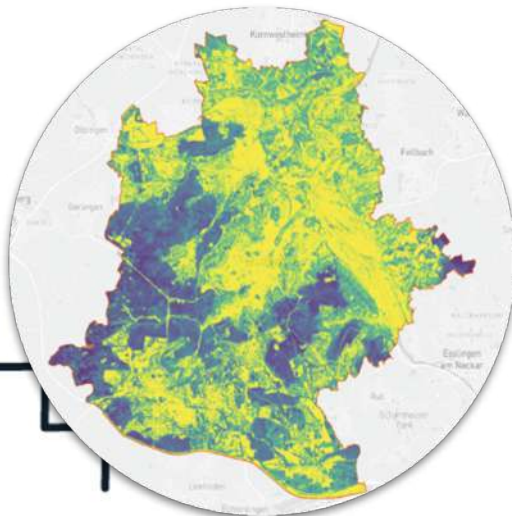
LAND USE



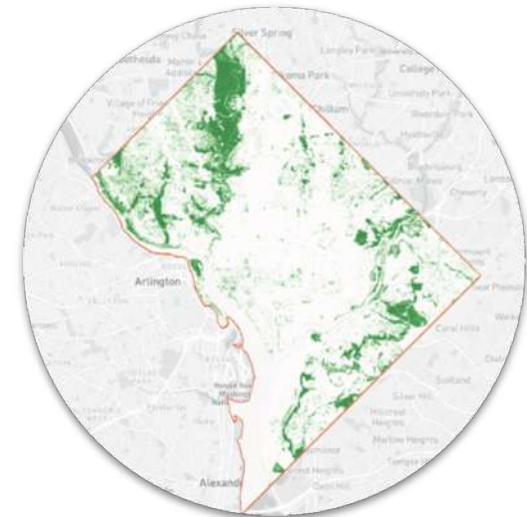
LAND SURFACE TEMP



TREE COVER DENSITY



GREENERY HEALTH



A **fully automated** platform for capturing the **intricate details** of cities and places from above, with a **very high level of detail**, from the past to the present.

A unique tool for **tracking changes** in time and gaining **in-depth knowledge** of places

OUR INSIGHTS

identify patterns

(urban heat islands, risk for citizens)

predict future risks

data driven decisions

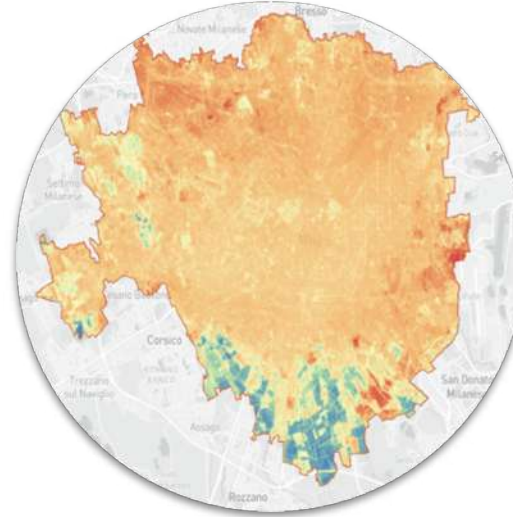
(plant trees to maximize cooling or
add more public green spaces with
permeable pavements)

validate the outcome of mitigation actions

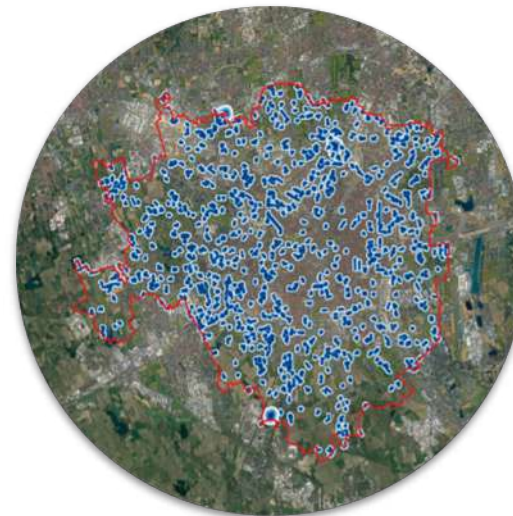
(environmental KPIs)



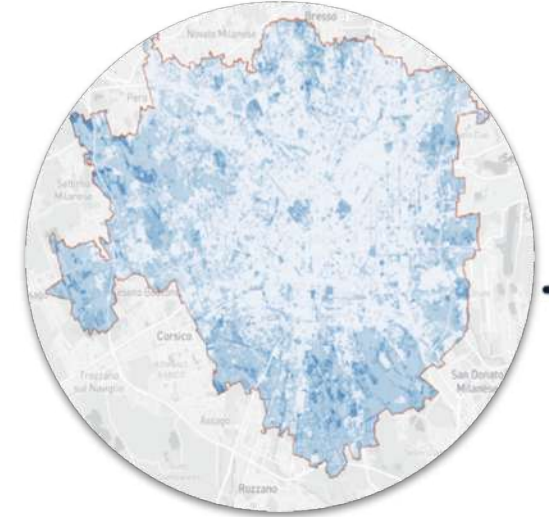
URBAN HEAT ISLAND MAP



PARK COOL ISLAND INDEX



LATITUDO40[®]
MICROCLIMATIC PERFORMANCES

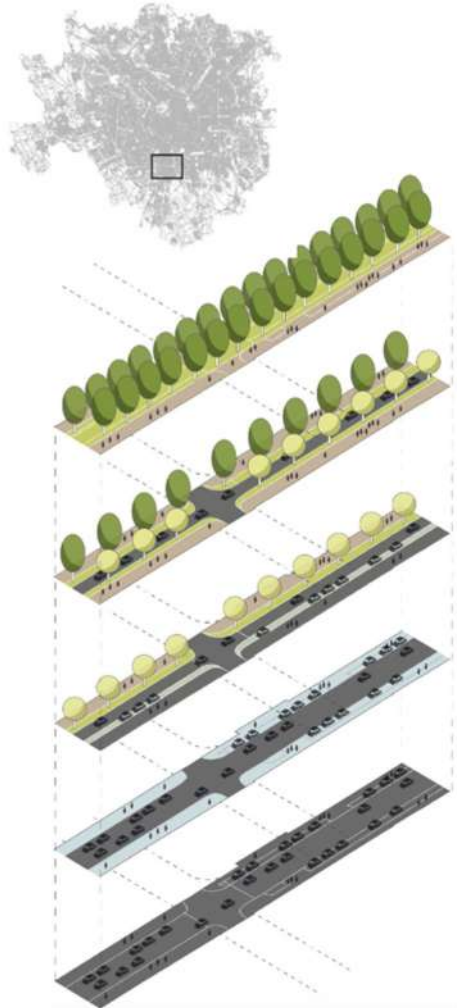


HEATWAVE POTENTIAL RISK INDEX

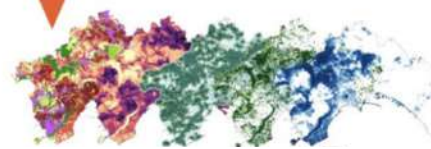


PREDICTING THE FUTURE WITH SIMULATION

Scenarios Simulation



Synthetic Images

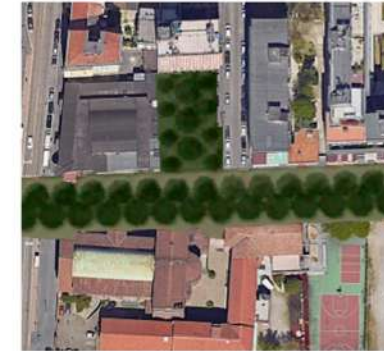


Simulated Layers



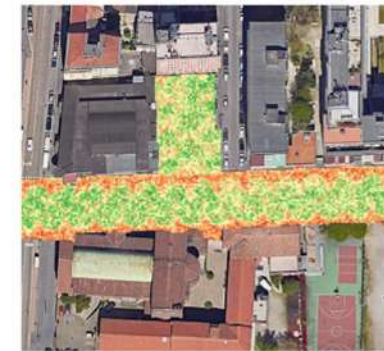
①

New City design



②

Synthetic Multispectral Data by Generative AI



③

Analysis on the simulated scenario



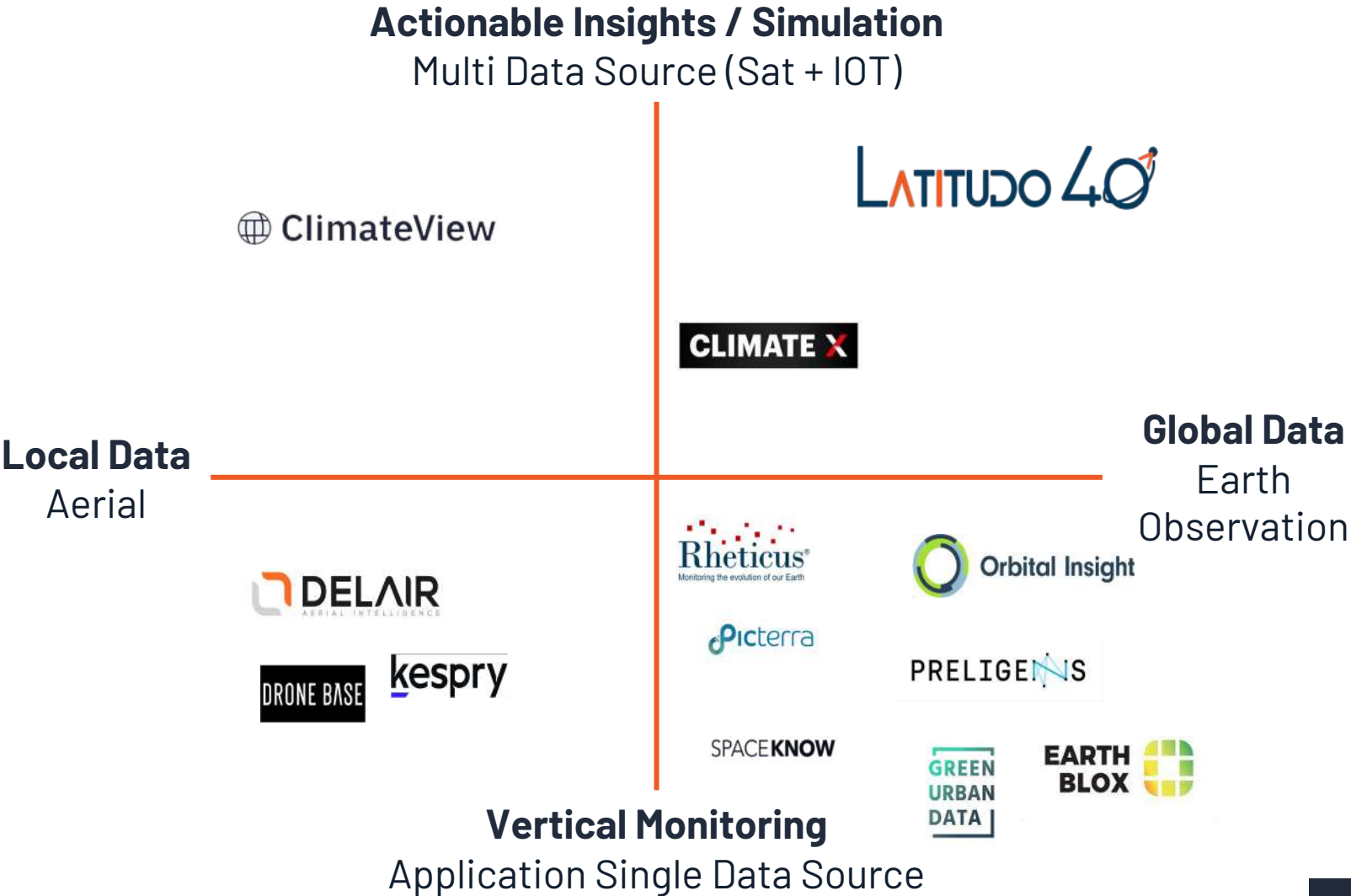
MARKET & COMPETITION



Companies applying AI/ML to EO/Imagery data



Global Market for AI Based Urban
Planning & Monitoring



OUR VALUE PROPOSITION

**Informed Decision
Making & Optimal
Resources Allocation**

**Cost Saving - to get
the information cities
need**

**Performance
Tracking - to track
performance of
sustainability
initiatives over time**

**Attracting
Investments - from
green finance as well
as from national and
international bodies**

**Regulatory
Compliance - meet
national or
international
regulations**

**Community and
Stakeholder
Engagement Data as
a common ground for
collaboration**

WE CREATE VALUE FOR...

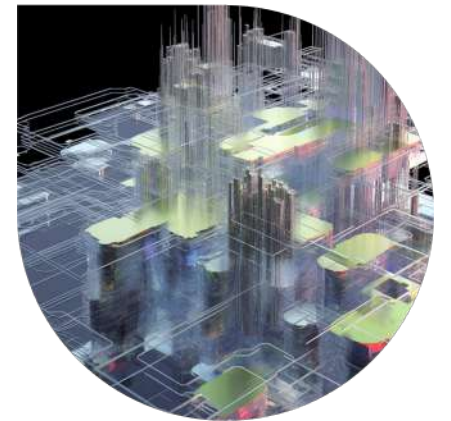


DIGITAL CITIES

Optimal Resources Allocation – Cost Saving – Sustainability
Program KPIs – Community Engagement

DIGITAL INTEGRATORS

DATASETS and INSIGHTS for digital twin / smart city
platforms / Urban Planning Tools



INFRASTRUCTURE – REAL ESTATE

Understanding of CLIMATE RISK and VULNERABILITY across
their portfolio – Support in investments planning

We are working with customers and partners across the globe to improve the lives of **15 million** citizens



Climate/Environmental risks identification and mitigation actions with Nature Based Solutions



New buildings identification and city sustainability index



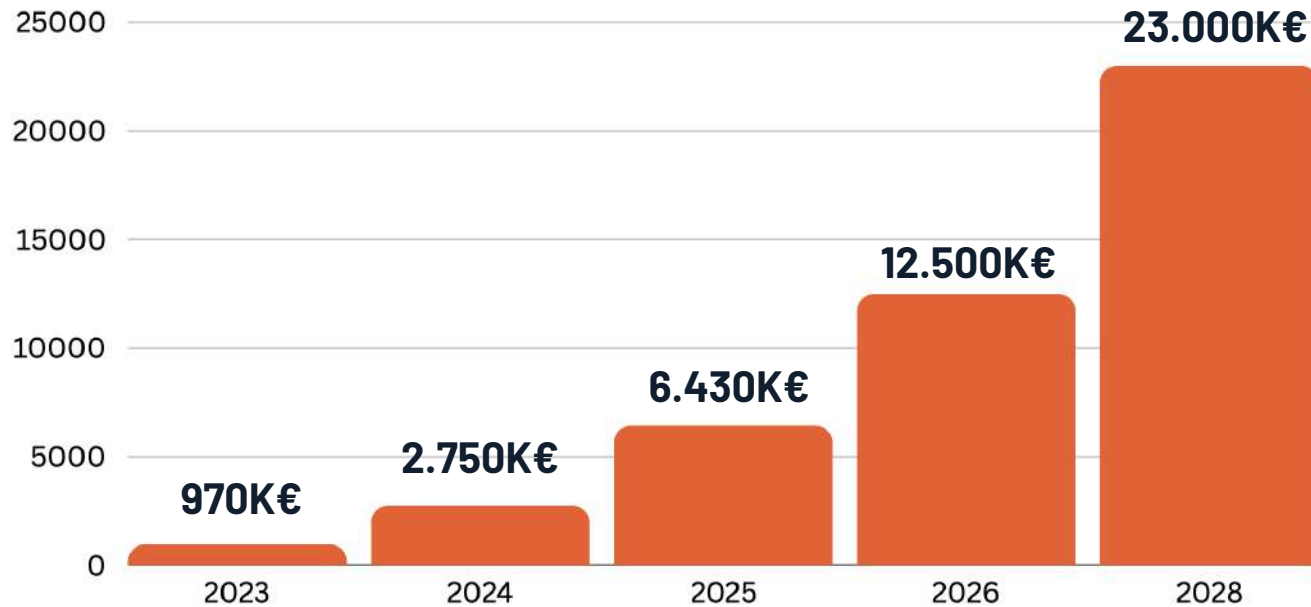
Urban Heat Island monitoring and Carbon Indexes 2023/27



Sustainability Projects and vegetation management



2024-2025 – Revenues Forecast



Acquired contracts

**2024:
2.070K Eur**

**Customer base in 2025:
~115
(20 in 2023)**

**EBITDA in 2025:
2,2M Eur
(35% on Revenues)**

MEET OUR TEAM



Scientists, Technologist and Creatives working **together** towards the same goal: a **thriving planet!**

FOUNDERS



Gaetano Volpe
CEO



Mauro Manente
COO



Donato Amitrano
VP R&D



Giovanni Giacco
CTO

INTEGRATION



Giulio Giudice
FRONTEND
DEV



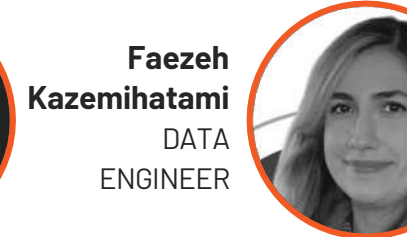
Christian De Nisi
FULLSTAKCK
DEV



Cristian Federiconi
AI ENGINEER



Davide Imperiale
DATA
ENGINEER



Faezeh Kazemihatami
DATA
ENGINEER



DATA SCIENCE



Mattia Rigioli
DATA SCIENTIST



Paolo De Piano
DATA SCIENTIST



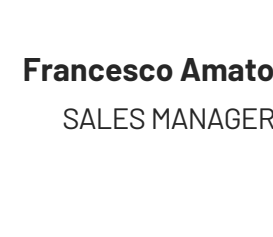
Antonio Pascarella
DATA SCIENTIST



Giuseppe Maione
DATA SCIENTIST



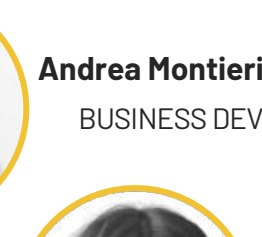
Ravi Kumar
Phd Student



Francesco Amato
SALES MANAGER



Deborah Valenti
URBAN PLANNER



Andrea Montieri
BUSINESS DEV



BUSINESS





**LET'S SHAPE A SUSTAINABLE
FUTURE **TOGETHER****

THANK YOU!

Gaetano Volpe
CEO

gaetano.volpe@latitudo40.com
+39 335 5797883

www.latitudo40.com